

# 人社院與University of Essex

---

「3+1」學碩銜接雙聯合約說明

# 簡要說明

---

- 人文社會科學學院與英國著名學府艾賽克斯大學（University of Essex）正式簽訂雙聯學制合約，學生在東華大學完成前3年的學業後，可於大四時申請前往英國就讀「3+1」學碩銜接雙聯課程，以1年時間銜接完成東華大學學士學位和艾賽克斯大學的碩士學位。
- 目前參與簽約學系為：英美系、臺灣系、經濟系、社會系、公行系。僅限以上所屬學系學生提出申請。

# 大三學生申請（大四出國）

---

- 於University of Essex就讀一年後，修滿最低學分並符合其他畢業相關規定，即可取得University of Essex碩士學位 + 東華大學學士學位
- 於各學系修完前三年課程後(須滿足各系最低畢業規定128學分)，於大四前往University of Essex就讀一年，修畢課程並符合各項規定（包括完成學位論文），依申請就讀之學程而定（各系可申請之學位不同，詳細資料請見附錄）取得該領域之碩士學位
- 艾塞克斯大學科系 <https://www.essex.ac.uk/departments>

# 申請時間及修業流程

---

- 每年於2月底前將申請相關資料繳至各學系申請。本校於3月中旬將資料提交University of Essex，讓該校進行審核，審核結果會另行公告，俾利學生於10月入學University of Essex。每年10月份入學，至遲於3月初前完成申請程序。

# 需具備成績

---

- 本校就讀期間總平均成績70分以上
- IELTS 6.5以上，且各項不低於5.5（此部分仍須視所申請之學程而定，請參考附錄資料，亦可透過E-MAIL([kevin.tan@essex.ac.uk](mailto:kevin.tan@essex.ac.uk))與該校承辦人Kevin洽詢，表明是台灣東華大學人社院的學生要申請就讀)
- 其他:大四時前往姊妹校修讀一年取得姊妹校碩士學位

# 相關費用說明

---

- **東華大學學費**
- 出國期間需於本校註冊並繳交全額學雜費
- **Essex學費及學分費**
- 學費：約21000英鎊（約合台幣84萬元，通過申請者另有獎學金。）
- 生活費（每年）\*：9000-12000英鎊（約合台幣34-45萬元）
- 住宿費（每年）\*\*：8200英鎊（約合台幣31萬元）

附註 \*學費為2023年之收費標準。

\*\*住宿費為2023年之收費標準，生活費則為對方學校之建議金額，實際則視自身之生活型態而定。

- 獎學金：申請通過者可獲得3000英鎊獎學金。

學生亦可自行申請州政府等相關單位之獎學金，相關資訊亦可跟該校承辦人Kevin洽詢。

# UNIVERSITY OF ESSEX PROGRESSION ROUTE WITH NATIONAL DONG HWA UNIVERSITY

IMPATIENT FOR CHANGE?  
STUDY AT ESSEX  
[essex.ac.uk](http://essex.ac.uk)






**Say Hello!**  
If you have a query, or want to chat about living and learning at Essex, get in touch –we'd love to hear from you.

**Contact our team based in Kuala Lumpur:**  
**E** : [kevin.tan@essex.ac.uk](mailto:kevin.tan@essex.ac.uk)  
**T** : +6013 810 7556 (Whatsapp)  
 [uniofessex\\_sea](https://www.whatsapp.com/chat?phone=60138107556)  
 [essexsea](https://www.instagram.com/essexsea)

[essex.ac.uk](http://essex.ac.uk)



-  Colchester
-  Southend
-  Loughton



All information are correct at time of printing June 2024.  
All progression routes listed are for reference only and admissions are subject to further eligibility criteria and conditions.

## Why Choose Essex?

Essex Introduces you to people from every corner of the planet to create networks that last for life. We are a genuinely global community that lives, works and plays together. You study an internationally relevant curriculum, are encouraged to live and study abroad, become part of our diverse community, and are taught or supervised by academics whose research has global impact. We give you the best chance to complete in a global economy.

**30<sup>TH</sup>**  
in the UK in The Guardian  
University Guide 2024

We are  
**TOP 15**  
for International Outlook  
(Times Higher Education, World  
University Rankings 2024)

**90%** OF OUR  
**POSTGRADUATE GRADUATES**  
are in highly skilled employment  
(Graduate Outcomes 2023)

## How to Apply

### Postgraduate :

Complete our application form:

[essex.ac.uk/postgraduate/masters/applying-to-essex](https://essex.ac.uk/postgraduate/masters/applying-to-essex)

### Submit your supporting documents:

- A copy of your most recent academic transcript
- Details of our English language proficiency test certificate (if available).  
For a full list of accepted tests, please see  
[essex.ac.uk/immigration/studies/english.aspx](https://essex.ac.uk/immigration/studies/english.aspx)
- Personal statement
- CV (if you have full-time work experience)

## Tuition Fees 2024 per Academic Year

### Postgraduate

Languages and Linguistics; Literature, Film and Theatre Studies; Sociology; Government; Philosophical, Historical and Interdisciplinary Studies      **GBP 21,700**

Essex Business School; Economics      **GBP 22,400**

## Scholarships (pending)

- Our **Essex Global Partner Scholarship (Masters)** offers scholarship worth GBP3,000 for self-funding students joining us through 3+1 links. Terms, conditions and deadlines apply.  
[essex.ac.uk/scholarships/essex-global-partner-scholarship-masters](https://essex.ac.uk/scholarships/essex-global-partner-scholarship-masters)





## Progression Routes to the Department of Sociology and Criminology

Progression and programme at Dong Hwa	Entry Requirements	Programme at University of Essex
<p><b>3+1</b></p> <p>Successful completion of the three years of a 4 year undergraduate degree in:</p> <ul style="list-style-type: none"> <li>• Department of Sociology</li> <li>• Department of Public Administration</li> <li>• Department of Taiwan and Regional Studies</li> </ul>	<ul style="list-style-type: none"> <li>■ Successful completion of the first 3 years of the specified undergraduate with an overall transcript average of 70%.</li> <li>■ Standard University of Essex English Language entry requirements:               <ul style="list-style-type: none"> <li>• IELTS 6.5 overall with a minimum component score of 6.0</li> </ul> </li> </ul>	<p>The following course in the <b>Department of Sociology and Criminology</b>:</p> <ul style="list-style-type: none"> <li>• MA Sociology</li> <li>• MA Sociology and Criminology</li> <li>• MA/MSc Migration Studies</li> <li>• MA Criminology</li> <li>• MA Sociological Research Methods</li> <li>• MA Advertising, Marketing and the Media</li> <li>• MSc Survey Methods for Social Research</li> <li>• MA/MSc Organised Crime, Terrorism and Security</li> </ul>

Admission of students to University of Essex will be assessed on a case by case basis.

## Progression Routes to the Philosophical Historical and Interdisciplinary Studies

Progression and programme at Dong Hwa	Entry Requirements	Programme at University of Essex
<p><b>3+1</b></p> <p>Successful completion of the three years of a 4 year undergraduate degree in:</p> <ul style="list-style-type: none"> <li>• Department of Sociology</li> <li>• Department of Taiwan and Regional Studies</li> </ul>	<ul style="list-style-type: none"> <li>■ Successful completion of the first 3 years of the specified undergraduate with an overall transcript average of 70%.</li> <li>■ Standard University of Essex English Language entry requirements:               <ul style="list-style-type: none"> <li>• IELTS 6.5 overall with a minimum component score of 6.0 in writing and 5.5 in all other components</li> </ul> </li> </ul> <p>The courses below require IELTS 7.0 overall with a minimum score of 5.5 in all components:</p> <ul style="list-style-type: none"> <li>• MA War, Culture and Society</li> <li>• MA History, Power and Identity</li> <li>• MA Philosophy</li> </ul>	<p>The following course in the <b>Philosophical Historical and Interdisciplinary Studies</b>:</p> <ul style="list-style-type: none"> <li>• MA War, Culture and Society</li> <li>• MA Social and Political Thought</li> <li>• MA History, Power and Identity</li> <li>• MA Environment, Society, and Culture</li> <li>• MA Philosophy</li> <li>• MA Western Marxism and Translation</li> <li>• MA Western Marxism</li> </ul>
<ul style="list-style-type: none"> <li>• Department of English</li> </ul>		<ul style="list-style-type: none"> <li>• MA Western Marxism and Translation</li> <li>• MA Environment, Society, and Culture</li> </ul>

Admission of students to University of Essex will be assessed on a case by case basis.

## Progression Routes to the Department of Government

Progression and programme at Dong Hwa	Entry Requirements	Programme at University of Essex
<p><b>3+1</b></p> <p>Successful completion of the three years of a 4 year undergraduate degree in:</p> <ul style="list-style-type: none"> <li>• <b>Department of Public Administration</b></li> </ul>	<ul style="list-style-type: none"> <li>■ Successful completion of the first 3 years of the specified undergraduate with an overall transcript average of 70%.</li> <li>■ Standard University of Essex English Language entry requirements:</li> <li>• IELTS 6.5 overall with a minimum component score of 6.0</li> </ul>	<p>The following course in the <b>Department of Government</b>:</p> <ul style="list-style-type: none"> <li>• MA/MSc International Relations</li> <li>• MA Ideology and Discourse Analysis</li> <li>• MA/MSc Politics</li> <li>• MA Political Theory</li> <li>• Master of Public Policy: The Essex MPP</li> <li>• MA/MSc Environmental Futures with Climate Change</li> <li>• MA/MSc Conflict Resolution</li> <li>• MSc Politics, Communications and Data Analytics</li> </ul>

Admission of students to University of Essex will be assessed on a case by case basis.

## Progression Routes to the Department of Language and Linguistics

Progression and programme at Dong Hwa	Entry Requirements	Programme at University of Essex
<p><b>3+1</b></p> <p>Successful completion of the three years of a 4 year undergraduate degree in:</p> <ul style="list-style-type: none"> <li>• <b>Department of English</b></li> </ul>	<ul style="list-style-type: none"> <li>■ Successful completion of the first 3 years of the specified undergraduate with an overall transcript average of 70%.</li> <li>■ Standard University of Essex English Language entry requirements: <ul style="list-style-type: none"> <li>• IELTS 6.5 overall with a minimum component score of 6.0 in writing and 5.5 in all other components</li> </ul> </li> <li>■ Applicants are required to successfully pass a Translation and/or Interpreting aptitude test for the following courses in the Department of Language and Linguistics: <ul style="list-style-type: none"> <li>• MA Advanced Interpreting with Specialised Translation (Chinese-English)</li> <li>• MA Audiovisual and Literary Translation</li> <li>• MA Chinese-English Translation and Professional Practice</li> <li>• MA Conference Interpreting and Translation (Chinese-English)</li> <li>• MA Translation, Interpreting and Subtitling</li> <li>• MA Translation and Professional Practice</li> </ul> </li> </ul>	<p>All postgraduate taught courses in the <b>Department of Language and Linguistics</b>:</p> <ul style="list-style-type: none"> <li>• MA Linguistics</li> <li>• MA Psycholinguistics</li> <li>• MA Applied Linguistics</li> <li>• MA English Language and Linguistics</li> <li>• MA Audiovisual and Literary Translation</li> <li>• MA Translation and Professional Practice</li> <li>• MA Translation, Interpreting and Subtitling</li> <li>• MA Chinese-English Translation and Professional Practice</li> <li>• MA Conference Interpreting and Translation (Chinese-English)</li> <li>• MA Teaching English to Speakers of Other Languages (TESOL)</li> <li>• MA Advanced Interpreting with Specialised Translation (Chinese-English)</li> </ul>

Admission of students to University of Essex will be assessed on a case by case basis.

## Progression Routes to the Department of Economics

Progression and programme at Dong Hwa	Entry Requirements	Programme at University of Essex
<p><b>3+1</b></p> <p>Successful completion of the three years of a 4 year undergraduate degree in:</p> <p>• <b>Department of Economics</b></p>	<ul style="list-style-type: none"> <li>■ Successful completion of the first 3 years of the specified undergraduate with an overall transcript average of 70%.</li> <li>■ Standard University of Essex English Language entry requirements:               <ul style="list-style-type: none"> <li>• IELTS 6.0 overall with a minimum component score of 5.5</li> <li>*IELTS 6.5 overall with a minimum component score of 6.0</li> </ul> </li> </ul>	<p>All relevant postgraduate taught courses in the <b>Department of Economics</b>:</p> <ul style="list-style-type: none"> <li>• MA/MSc Economics</li> <li>• MA Economics with Public Policy</li> <li>• MA Financial Economics</li> <li>• MA International Development</li> <li>• MA International Economics</li> <li>• MA Management Economics</li> <li>• MSc Applied Economics and Data Analysis</li> <li>• MSc Behavioural and Experimental Economics</li> <li>• MSc Economics of Business and Management</li> <li>• MSc Economics with Data Analytics</li> <li>• MSc Financial and Business Economics</li> <li>• MSc Financial Econometrics</li> <li>• MSc Financial Economics</li> <li>• MSc Financial Economics and Accounting</li> <li>• MSc Financial Economics and Econometrics</li> <li>• MSc Financial Technology (Economics)</li> <li>• MSc International Economics</li> <li>• MSc Management Economics</li> <li>• MSc Money and Banking</li> <li>• MSc Quantitative International Development</li> <li>• MSc Economics and Econometrics*</li> </ul>

Admission of students to University of Essex will be assessed on a case by case basis.

## Progression Routes to the and Essex Business School

Progression and programme at Dong Hwa	Entry Requirements	Programme at University of Essex
<p><b>3+1</b></p> <p>Successful completion of the three years of a 4 year undergraduate degree in:</p> <p>• <b>Department of Economics</b></p>	<ul style="list-style-type: none"> <li>■ Successful completion of the first 3 years of the specified undergraduate with an overall transcript average of 70%.</li> <li>■ Standard University of Essex English Language entry requirements:               <ul style="list-style-type: none"> <li>• IELTS 6.5 overall with a minimum component score of 6.0</li> </ul> </li> </ul>	<p>All relevant postgraduate taught courses in <b>Essex Business School</b>:</p> <ul style="list-style-type: none"> <li>• MSc Accounting</li> <li>• MSc Accounting and Finance</li> <li>• MSc Accounting and Financial Management</li> <li>• MSc Financial Economics and Accounting</li> <li>• MSc Management</li> <li>• MSc Finance</li> <li>• MSc Banking and Finance</li> <li>• MSc Finance and Data Analytics</li> <li>• MSc Investment and Wealth Management</li> <li>• MSc Financial Engineering and Risk Management</li> <li>• MSc Financial Technology (Finance)</li> <li>• MSc Finance and Management</li> <li>• MSc Business Analytics</li> <li>• MSc Human Resource Management</li> <li>• MSc Entrepreneurship and Innovation</li> <li>• MSc Organisational Change Management</li> <li>• MSc Global Project Management</li> <li>• MSc International Business and Entrepreneurship</li> <li>• MSc International Logistics and Supply Chain Management</li> <li>• MSc International Marketing and Entrepreneurship</li> <li>• MSc Management (Marketing)</li> <li>• MSc Digital Marketing and Analytics</li> <li>• MBM Master of Business Management</li> </ul>

Admission of students to University of Essex will be assessed on a case by case basis.

## Progression Routes to the Department of Literature, Film, and Theatre Studies

Progression and programme at Dong Hwa	Entry Requirements	Programme at University of Essex
<p><b>3+1</b></p> <p>Successful completion of the three years of a 4 year undergraduate degree in:</p> <ul style="list-style-type: none"> <li>• Department of English</li> </ul>	<ul style="list-style-type: none"> <li>■ Successful completion of the first 3 years of the specified undergraduate with an overall transcript average of 70%.</li> <li>■ Standard University of Essex English Language entry requirements:               <ul style="list-style-type: none"> <li>• IELTS 7.0 overall with a minimum component score of 6.5</li> </ul> </li> </ul>	<p>All postgraduate taught courses in the <b>Department of Literature, Film, and Theatre Studies:</b></p> <ul style="list-style-type: none"> <li>• MA Literature</li> <li>• MA American Literatures</li> <li>• MA Film and Literature</li> <li>• MA Literature and Creative Writing</li> <li>• MA Modern and Contemporary Literature</li> <li>• MA Creative Writing</li> <li>• MA Wild Writing: Literature, Landscape and the Environment</li> <li>• MA International Journalism</li> <li>• MA Theatre Practice</li> <li>• MA Film Studies</li> <li>• MA Scriptwriting (Theatre and Digital Media)</li> </ul>

Admission of students to University of Essex will be assessed on a case by case basis.

## Knowledge Transfer Partnership (KTP)

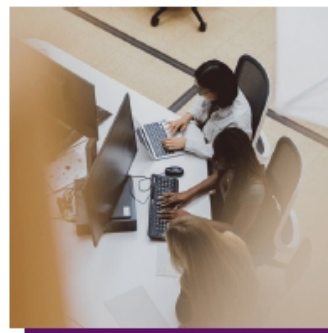
A Knowledge Transfer Partnership (KTP) is a collaboration between a business, an academic team, and a qualified graduate, lasting 1 to 3 years. Funded by Innovate UK and Research Councils, KTPs drive innovation and growth by transferring university expertise to businesses, with up to £100,000 in funding to minimize risk. We support the entire process, from project scoping and funding to recruiting talent and project completion.



Signal AI: The company was formed out of a KTP in 2013 and have gone on to undertake two highly successful projects and held KTP project of the Year in 2018. Signal AI is now valued in excess of £75m.

- We're number 1 in the UK for active Innovate UK funded KTPs
- We have 40 active KTPs across nine academic departments

## Bloomberg virtual trading floor



The Bloomberg virtual trading floor facility at Essex Business School features 12 Bloomberg Terminals with access to the Bloomberg financial and almost real-time data feed. It's a hands-on facility that offers students at all levels the opportunity to learn essential portfolio management skills. It also helps you to learn how to model financial data in a practical setting based on the live financial markets.

## Essex For all: Skills for Life

At Essex, we believe in learning beyond degree programs. Our short courses help you expand your knowledge and prepare for life's challenges. Whether you're interested in sustainability, social justice, or learning a new language, our courses build skills for future success.

- Languages For All
- Data For All

